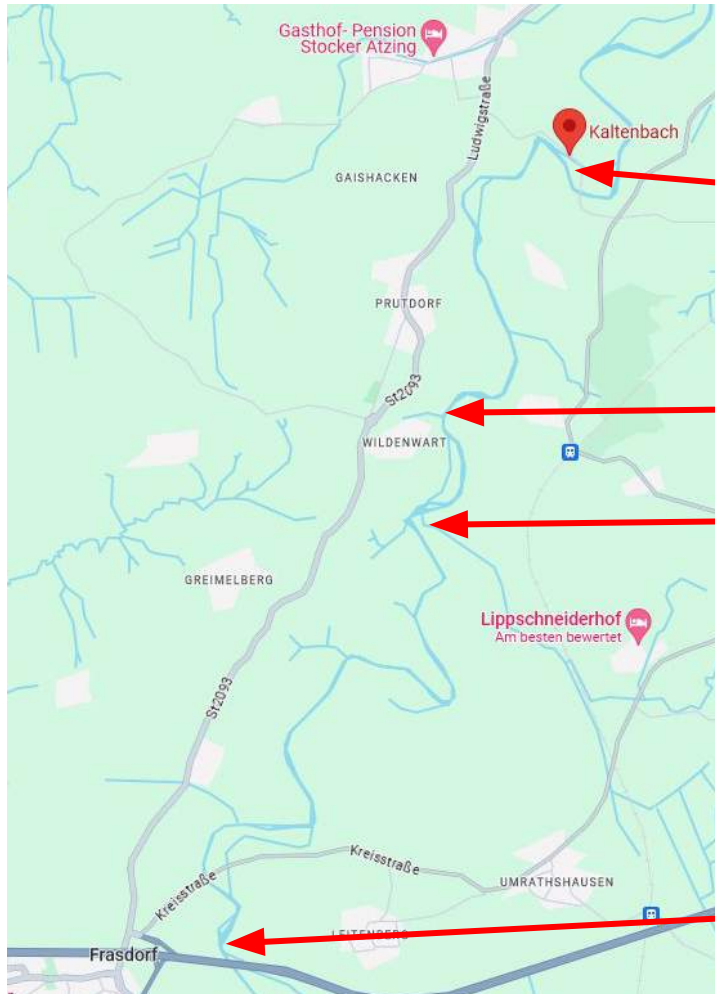


Hindernisse im Fluss Prien zwischen Frasdorf und Kaltenbach

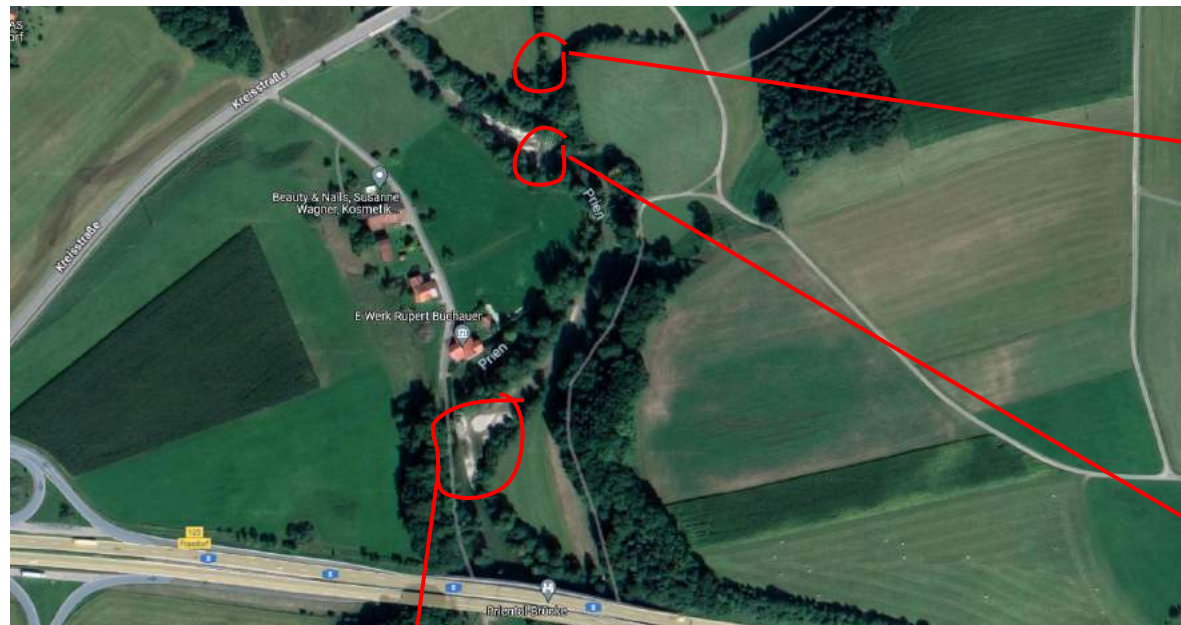


5

4

3

1,2



Tiefliegende Brücke

1,2



Schleuse Bypass

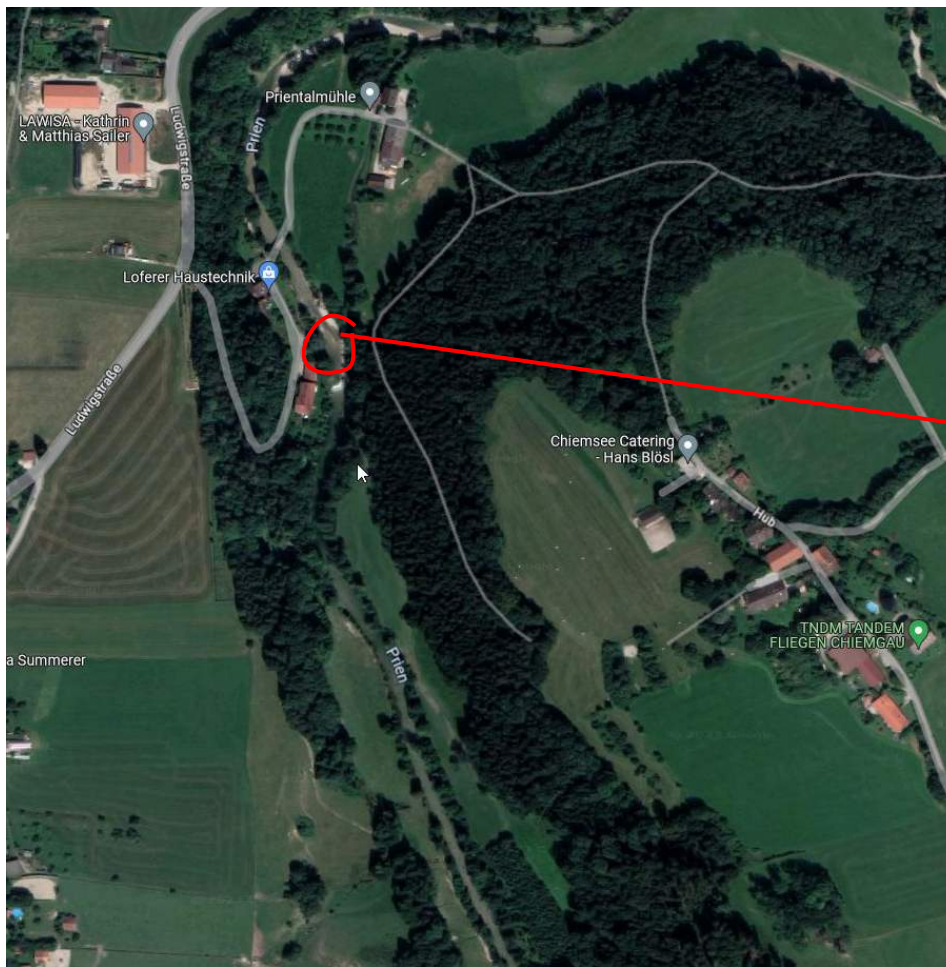


Treppen vor ewerk



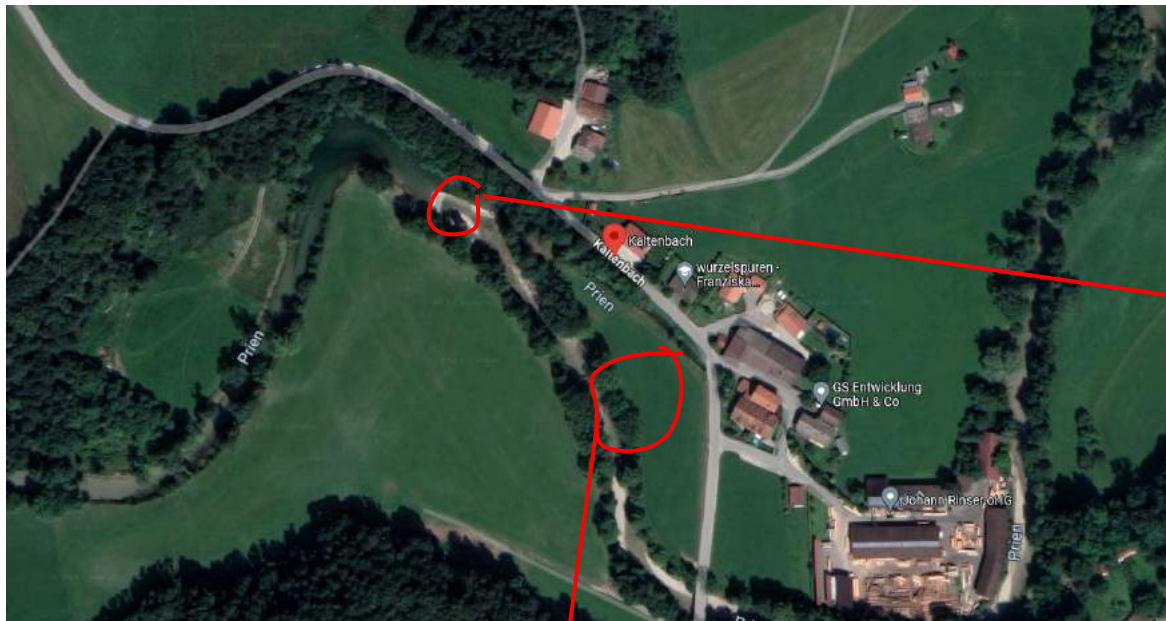
Wehr ca. 2,5m h





Staustufen Wildenwart

5



Stauwehr Kaltenbach ca.
2,5m h



Fundort